

# Instruction



**Genuine  
Accessories**

**GB**

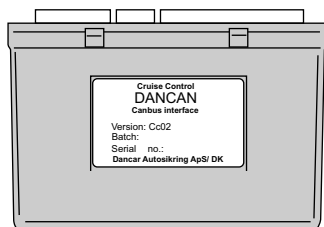
Model	Getz	6/9 2007→	Type of model	CRDI
	I10	2008 →	Description	Cruise control
	Tucson	1/9 2007→	Part number	E9600 99015
			Manufacturer	Dancar Autosikring
Production	30/4-2008		Installation time	20 min.



TESTED AND  
APPROVED  
UNTIL 140 Km/h

The product which is described in the guide was developed, produced and inspected as regards the necessary security precautions. In order to guarantee a faultless operation and thus exclude the danger to people and objects, this product must be mounted in accordance with professional guidelines. Internal fitting must thus only be performed by professionals who possess the necessary technical knowledge and the necessary tools. The mounting guide must be read thoroughly. Before starting the mounting you must make sure that the mounting kit is complete.

**CC 002**



Version  
7.2 →

## CONTENT

**DC-CC-OE-6**



Main cable

**DC 10310**

6 pole



Interface for  
Brake switch



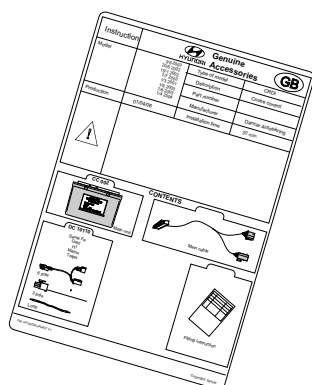
Loop



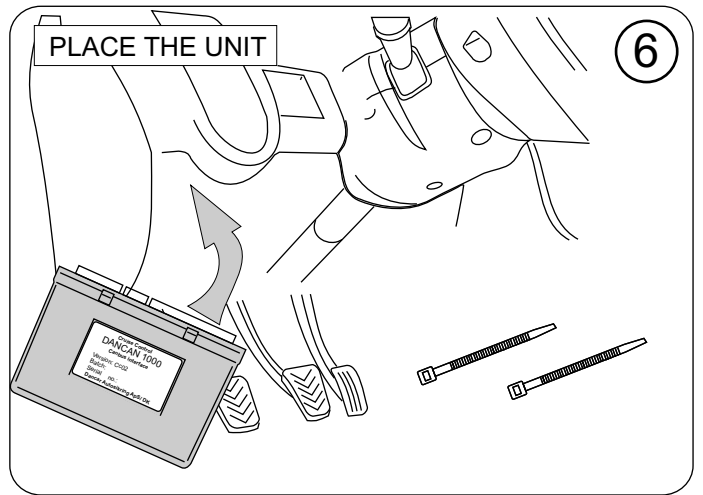
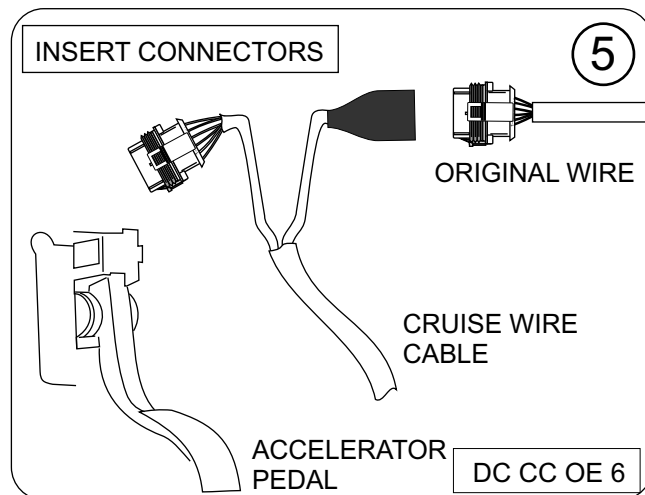
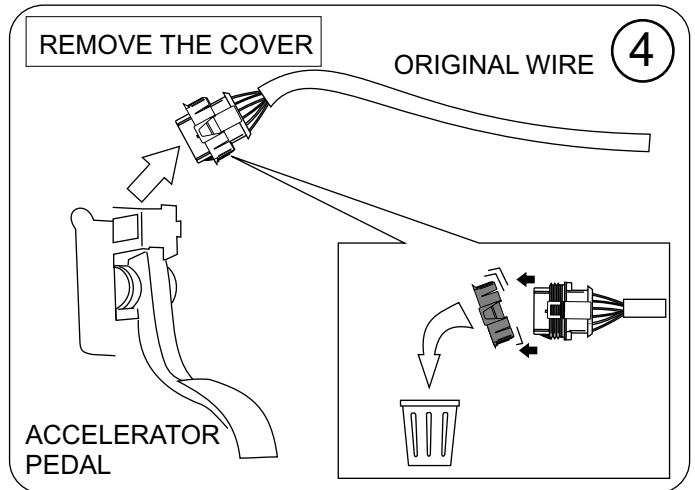
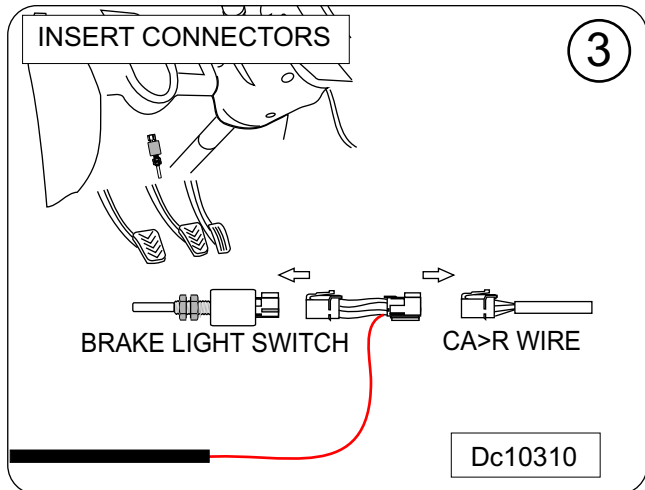
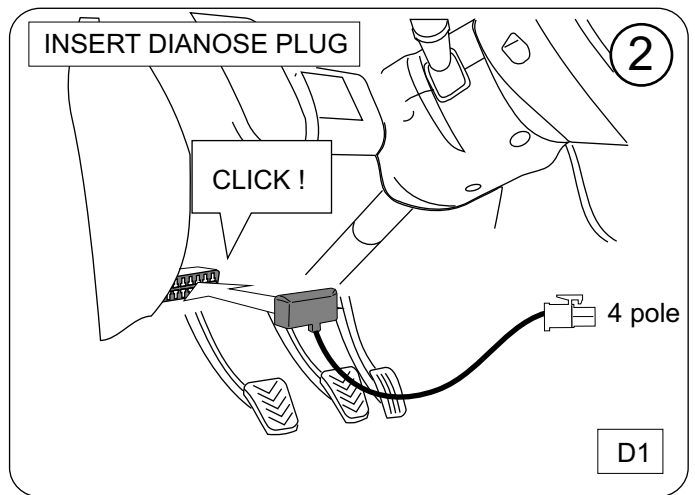
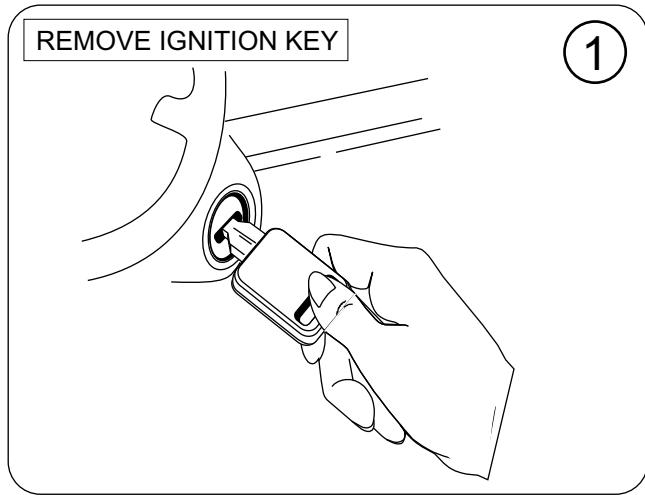
4 pole

CAN interface D1

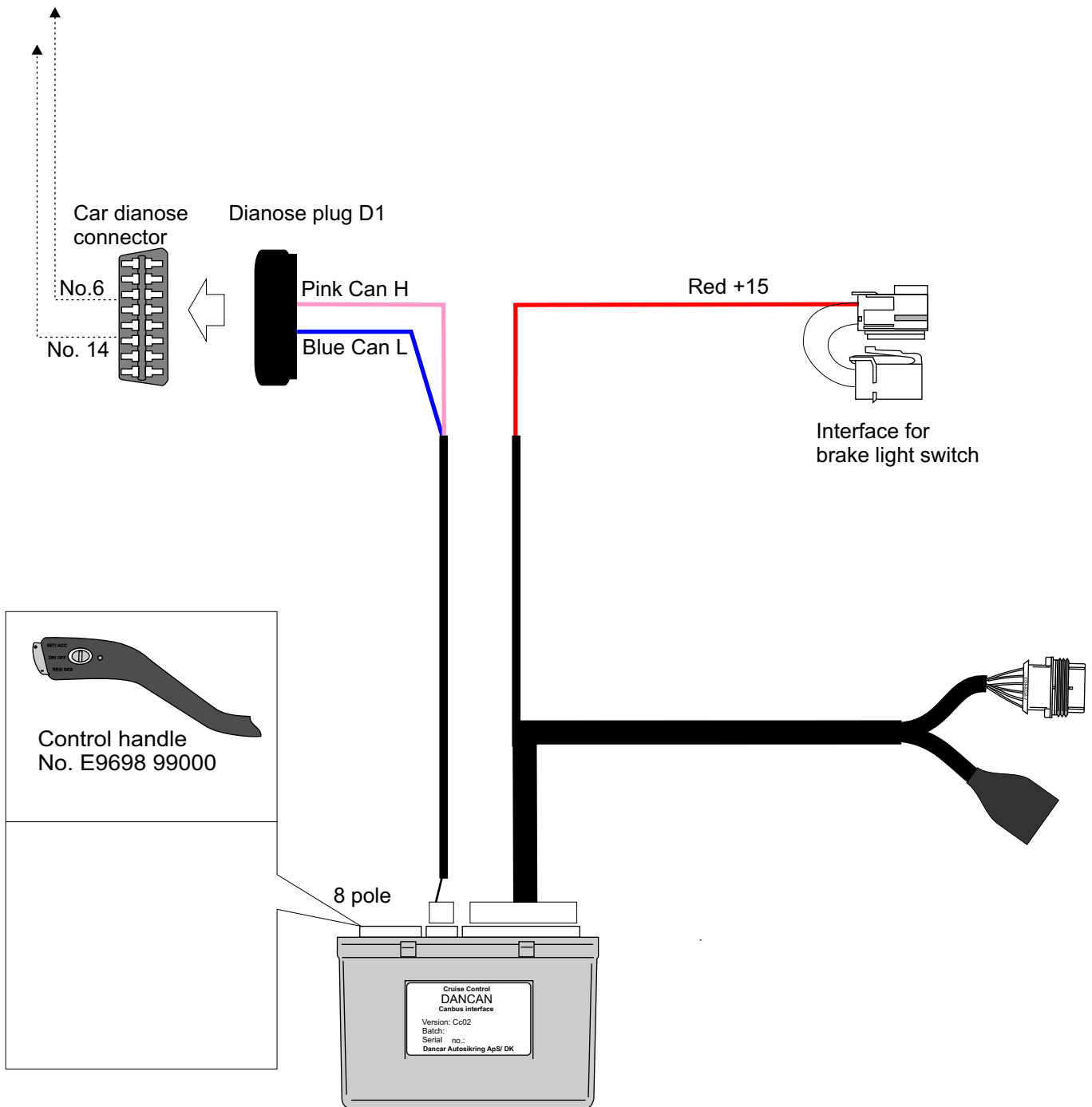
**JKH060GB**



Instruction



## GENERAL SCHEME



### Note

#### SERVICE OF THE CAR

**Access to the car dianose connector, can be done by temporarily removal of the D1 dianose plug.**

### DATA

#### Tecnical information:

Consumption	20 mAh
Dimensions:	82X53X27
Weight:	57 g.
Supply:	12 v. dc
Marking:	<b>E11</b> marking
Patent:	Pr176226
TÜV/KBA:	90989
User instruction:	Seperat

e11

10R-023610 Part No. 01T-063338

NOTES
-------

