


Instruction



**Genuine
Accessories**

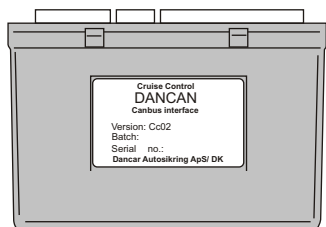
GB

Model	I 30 1/7 2007 →	Type of model	CRDI 1.6 90 HP
		Description	Cruise control
		Part number	E9600 99014B HYU CAN 1
		Manufacturer	Dancar Autosikring
Production	220607	Installation time	20 min.
<div>  <p>TESTED AND APPROVED UNTIL 140 Km/h</p> </div> <p>The product which is described in the guide was developed, produced and inspected as regards the necessary security precautions. In order to guarantee a faultless operation and thus exclude the danger to people and objects, this product must be mounted in accordance with professional guidelines. Internal fitting must thus only be performed by professionals who possess the necessary technical knowledge and the necessary tools. The mounting guide must be read thoroughly. Before starting the mounting you must make sure that the mounting kit is complete.</p>			

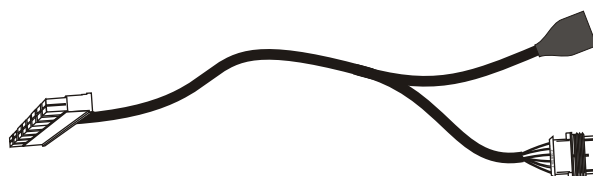
CC 002

CONTENTS HYU CAN 1

DC 20100



Version
7.x →



Main cable

DC 10310

6 pole



Interface for
Brake switch



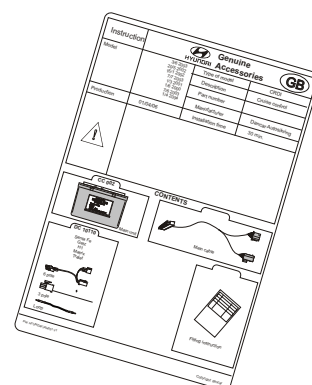
Loop



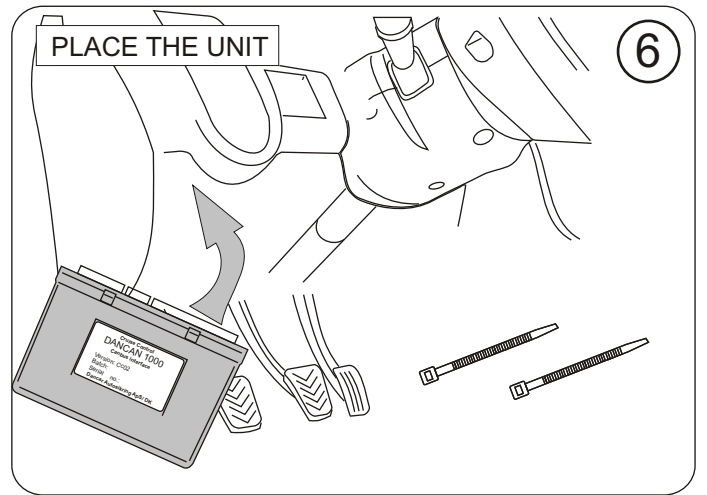
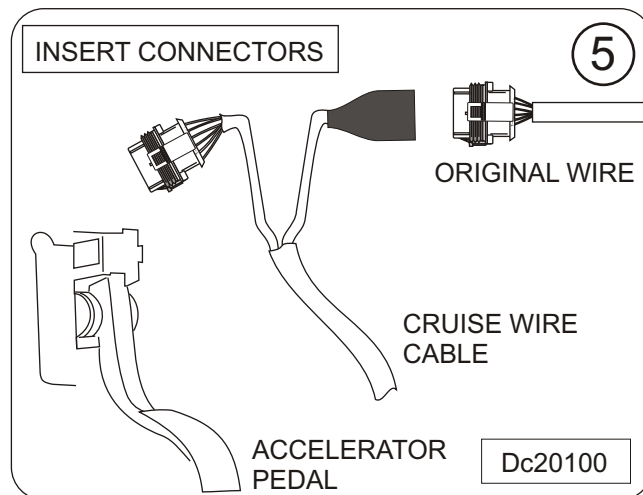
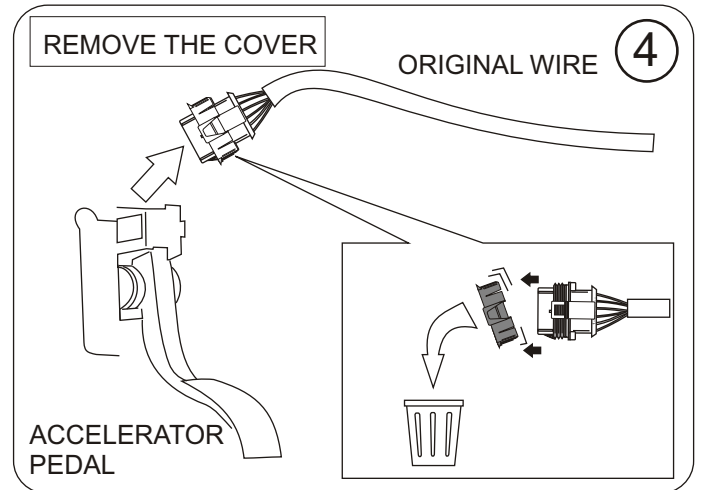
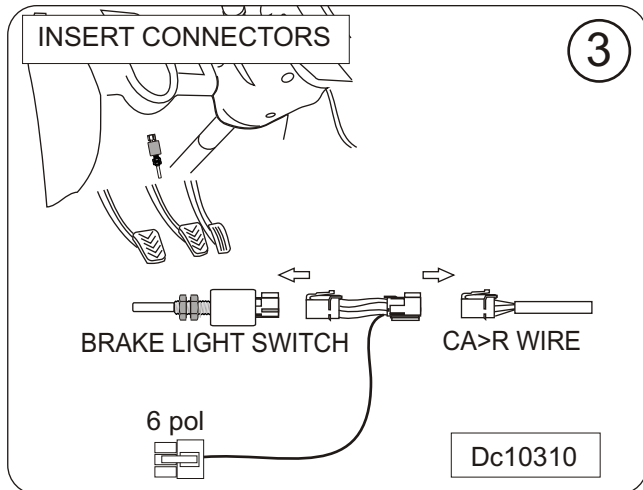
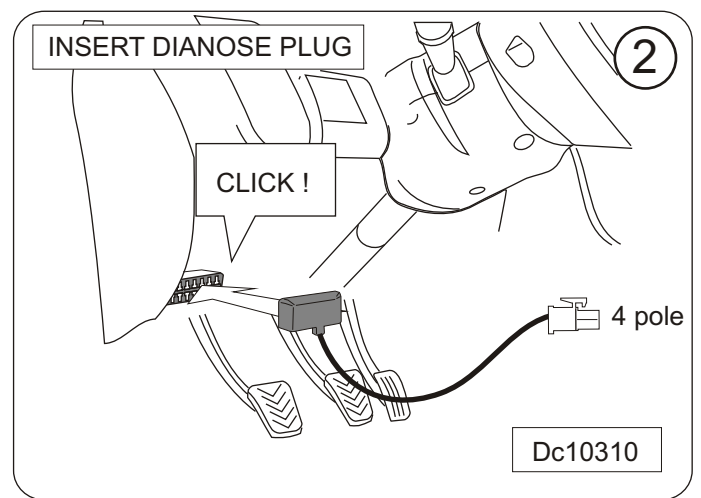
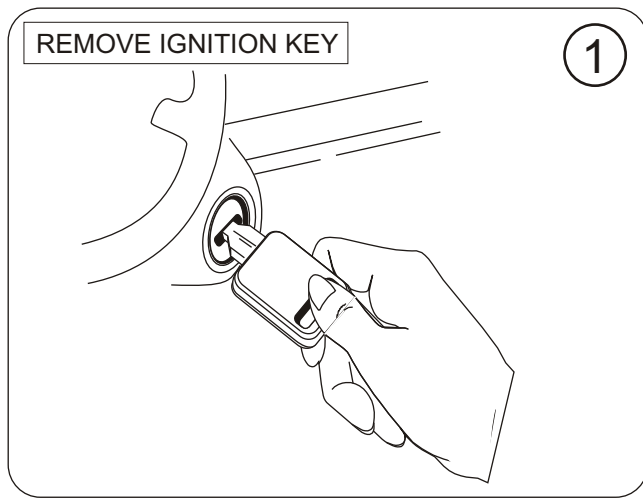
4 pole

CAN interface D1

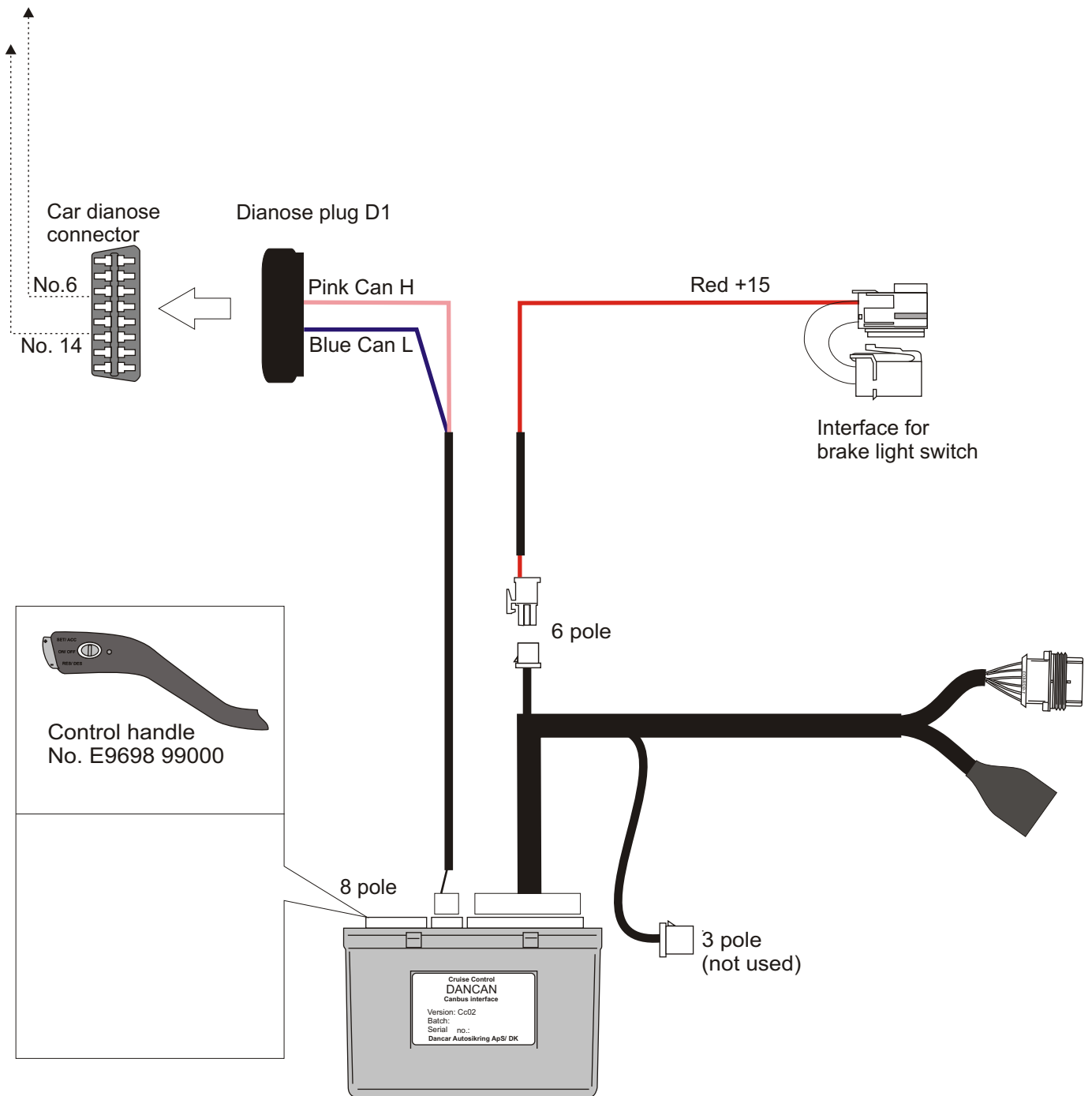
JKH040GB



Instruction



GENERAL SCHEME



Note

SERVICE OF THE CAR

Access to the car dianose connector, can be done by temporarily removal of the D1 dianose plug.

DATA

Technical information:

Consumption	20 mAh
Dimensions:	82X53X27
Weight:	57 g.
Supply:	12 v. dc
Marking:	E11 marking
Patent:	Pr176226
TÜV/KBA:	90989
User instruction:	Seperat

e11

10R-023610 Part No. 01T-063338

NOTES

Greiner Control
DANCAN 1000
Carbon interface
Version: CuS2
Serial: 86.
Danner Automating ApS DK

