

# Instruction



GB

Model	SPORTAGE II 2004 → CARNIVAL 2006 → SORENTO 2006 → CEED 2007 →	Type of model	CRDI
		Description	Cruise control
		Part number	E9600 66050B KIA CAN 1
		Manufacturer	Dancar Autosikring
Production	190607	Installation time	20 min.



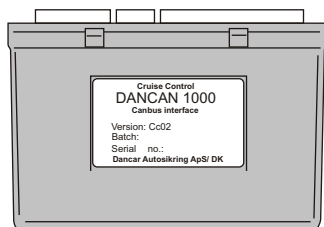
TESTED AND  
APPROVED  
UNTIL 140 Km/h

The product which is described in the guide was developed, produced and inspected as regards the necessary security precautions. In order to guarantee a faultless operation and thus exclude the danger to people and objects, this product must be mounted in accordance with professional guidelines. Internal fitting must thus only be performed by professionals who possess the necessary technical knowledge and the necessary tools. The mounting guide must be read thoroughly. Before starting the mounting you must make sure that the mounting kit is complete.

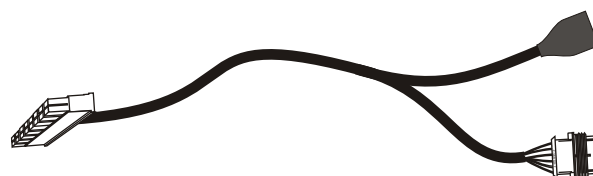
CC 002

## CONTENTS KIA CAN 1

DC 20100

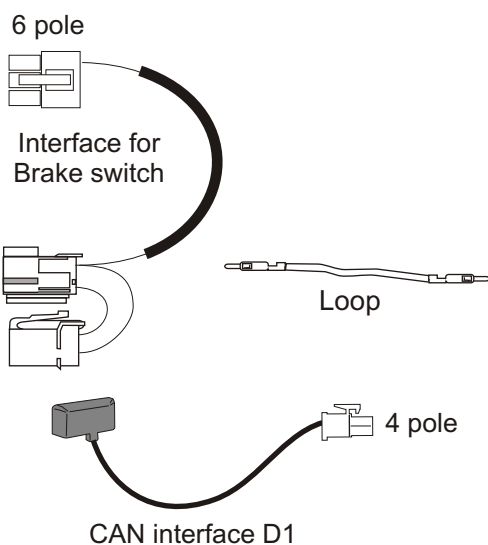


Version  
5.2 →

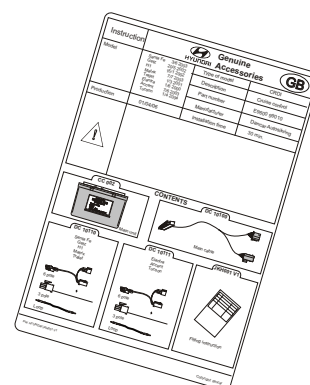


main cable

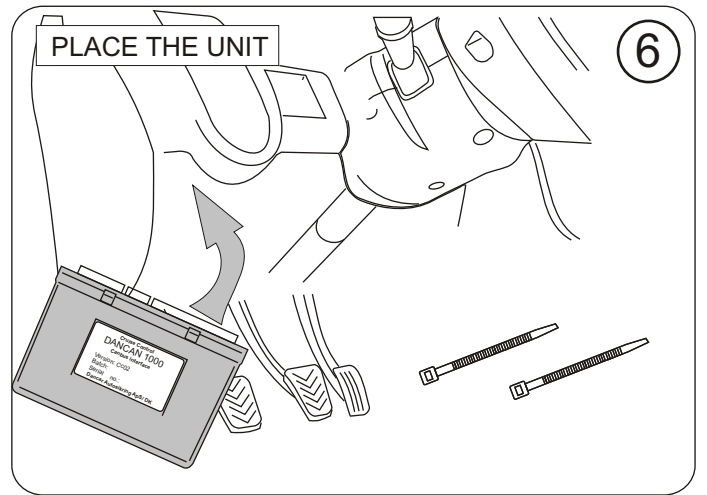
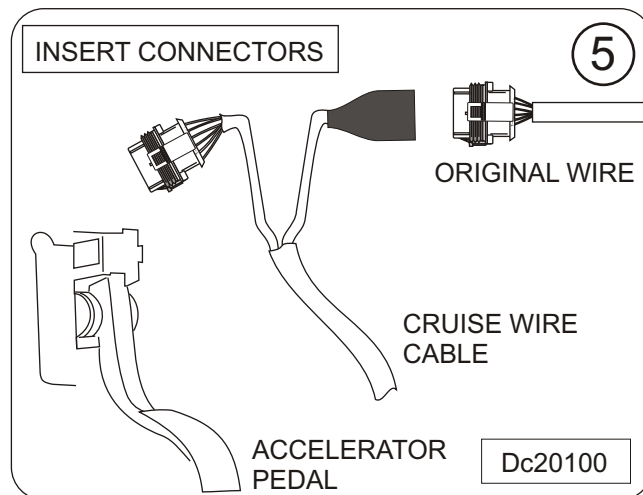
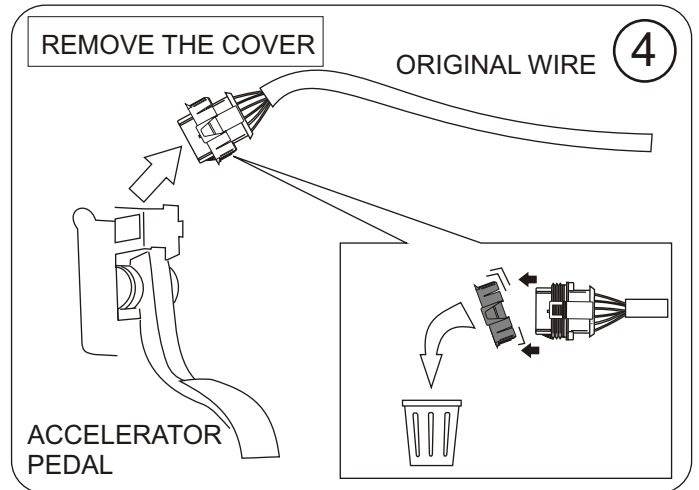
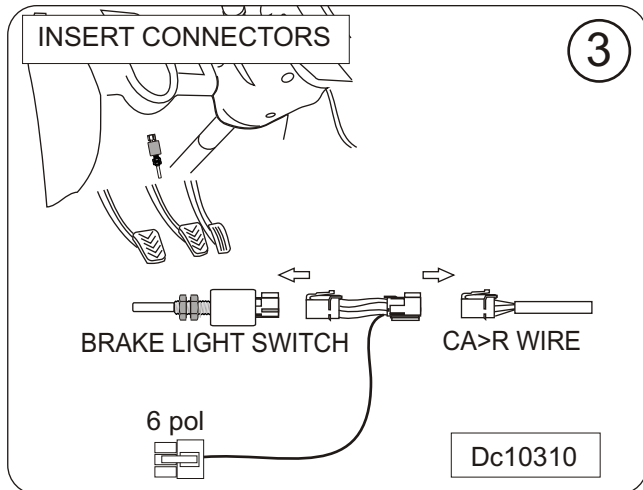
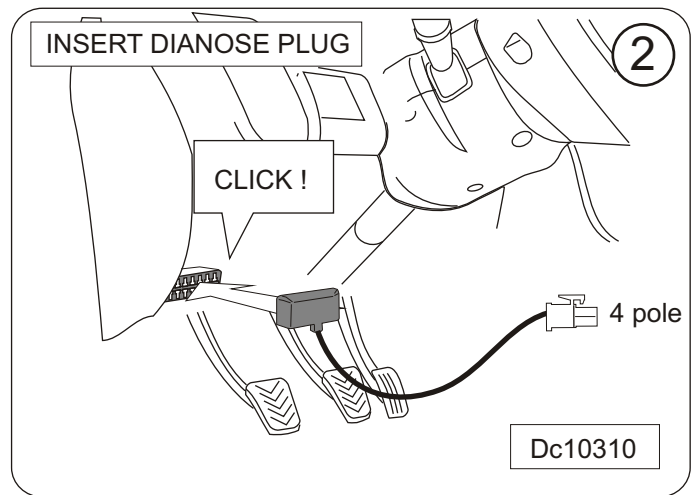
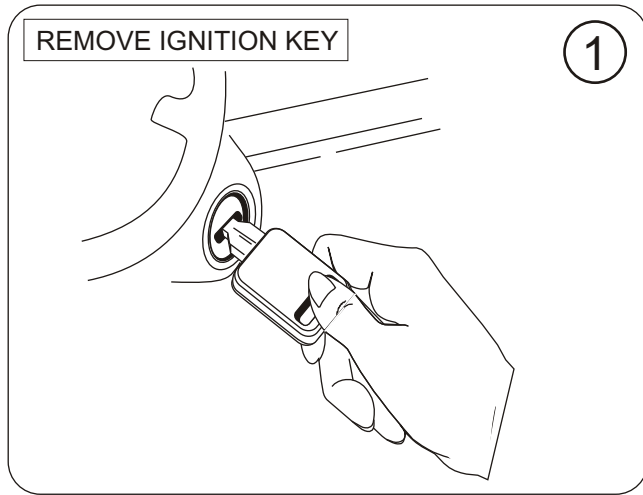
DC 10310



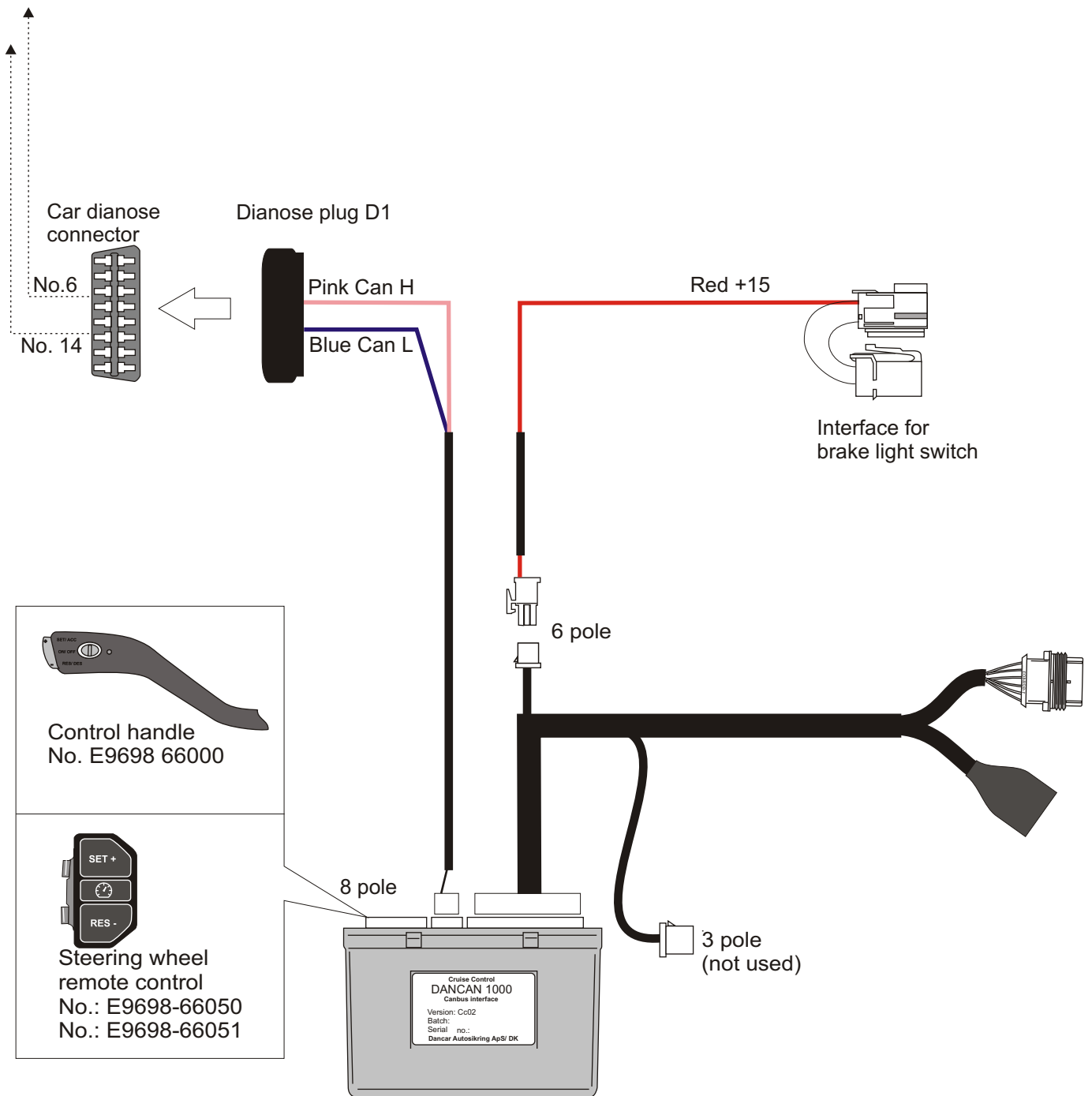
JKH0015GB



Instruction



## GENERAL SCHEME



### Note

#### SERVICE OF THE CAR

**Access to the car dianose connector, can be done by temporarily removal of the D1 dianose plug.**

### DATA

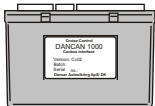



#### Technical information:

Consumption	20 mAh
Dimensions:	82X53X27
Weight:	57 g.
Supply:	12 v. dc
Marking:	<b>E11</b> marking
Patent:	Pr176226
TÜV/KBA:	90989
User instruction:	Seperat

e11

10R-023610 Part No. 01T-063338

## NOTES

CAR-PROGRAM LIST					USABLE CONTROL UNIT		
Car model	Year						
			Remark	Program no:	E9698-66050	E9698-66051	E9698-66000
SPORTAGE KM	25/8 2004-		manual gear	5	Yes		Yes
CARNIVAL VQ	1/4 2006-		manual gear	3		Yes	Yes
CARNIVAL VQ	1/4 2006-		automatic	4		Yes	Yes
SORENTO BL	1/4 2006-			6		Yes	Yes
CEED	1/1 2007-		manual gear	7		Yes	Yes

Updated fitting instruction and carlist see:  
[www.dancar.dk](http://www.dancar.dk)