

# Instruction



GB

|            |   |                   |                           |
|------------|---|-------------------|---------------------------|
| Model      | SPORTAGE II 2004 →<br>CARNIVAL 2006 →<br>SORENTO 2006 → | Type of model     | CRDI                      |
|            |   | Description       | Cruise control            |
|            |   | Part number       | E9600 66050A<br>KIA CAN 1 |
|            |   | Manufacturer      | Dancar Autosikring        |
| Production | 11/05-07  | Installation time | 20 min.                   |



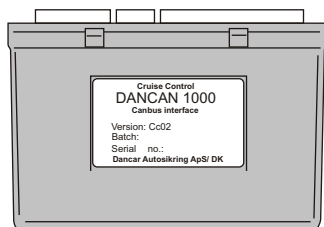
TESTED AND  
APPROVED  
UNTIL 140 Km/h

The product which is described in the guide was developed, produced and inspected as regards the necessary security precautions. In order to guarantee a faultless operation and thus exclude the danger to people and objects, this product must be mounted in accordance with professional guidelines. Internal fitting must thus only be performed by professionals who possess the necessary technical knowledge and the necessary tools. The mounting guide must be read thoroughly. Before starting the mounting you must make sure that the mounting kit is complete.

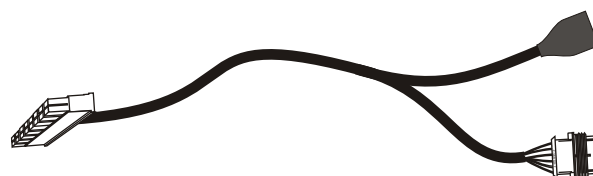
CC 002

## CONTENTS KIA CAN 1

DC 20100

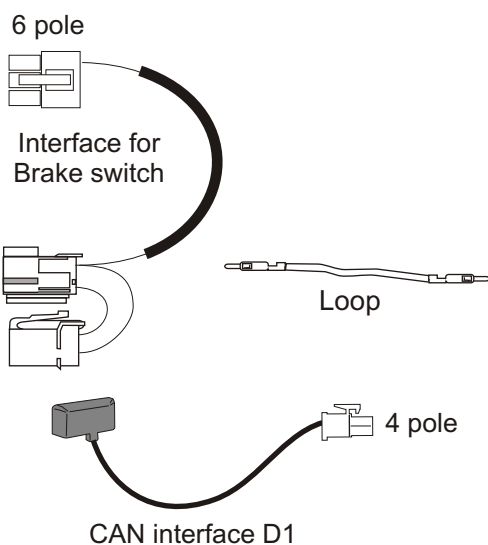


Version  
5.x

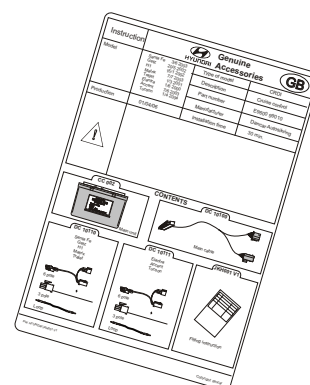


main cable

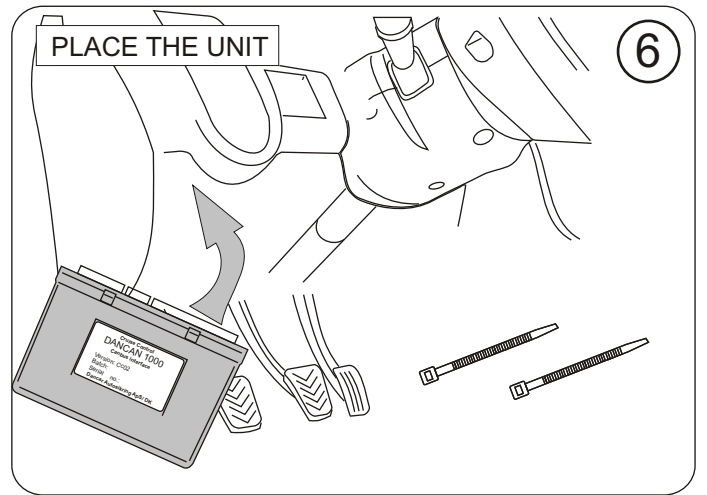
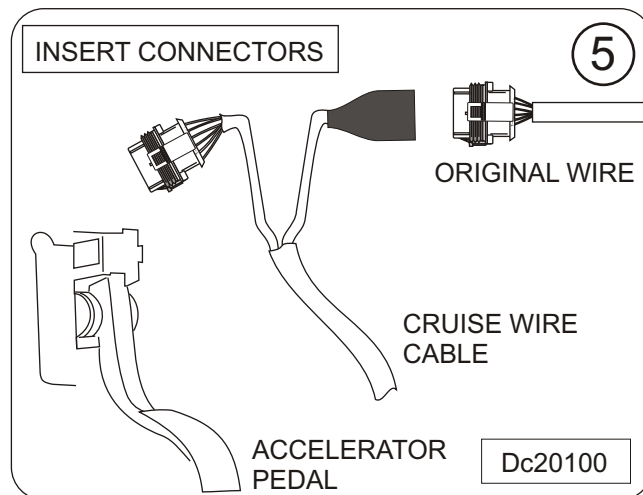
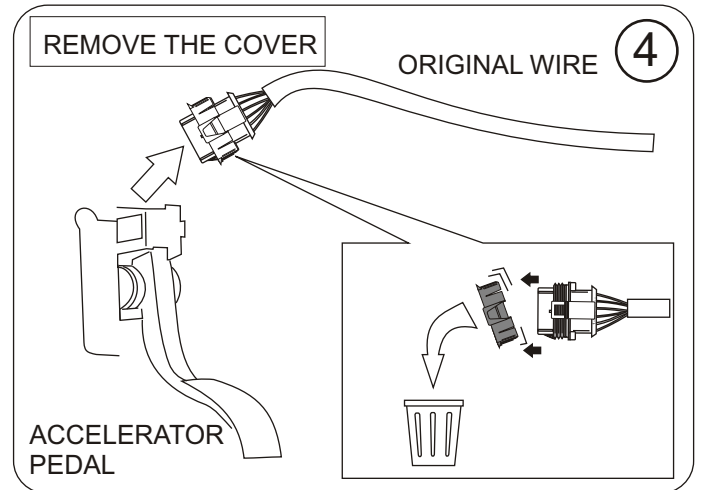
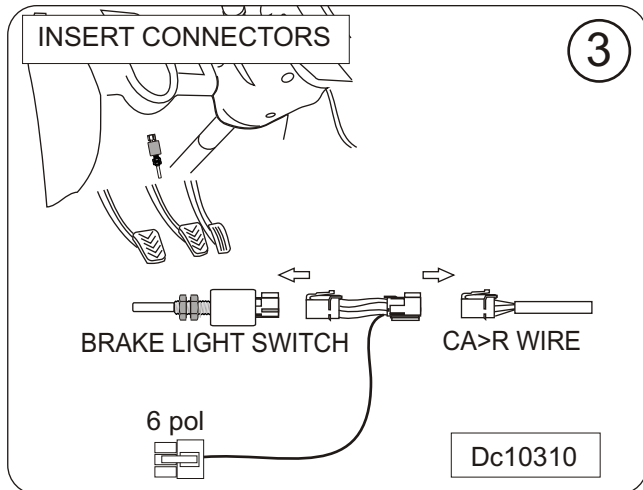
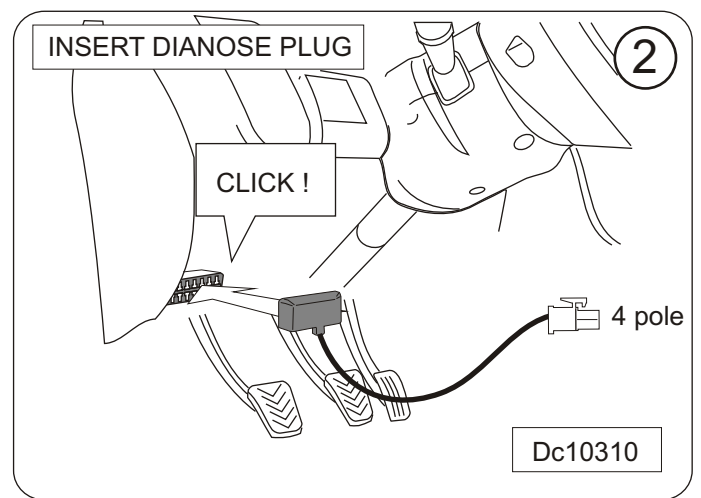
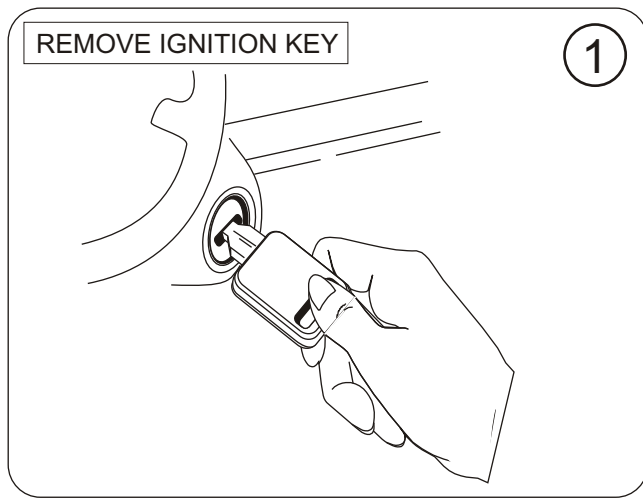
DC 10310



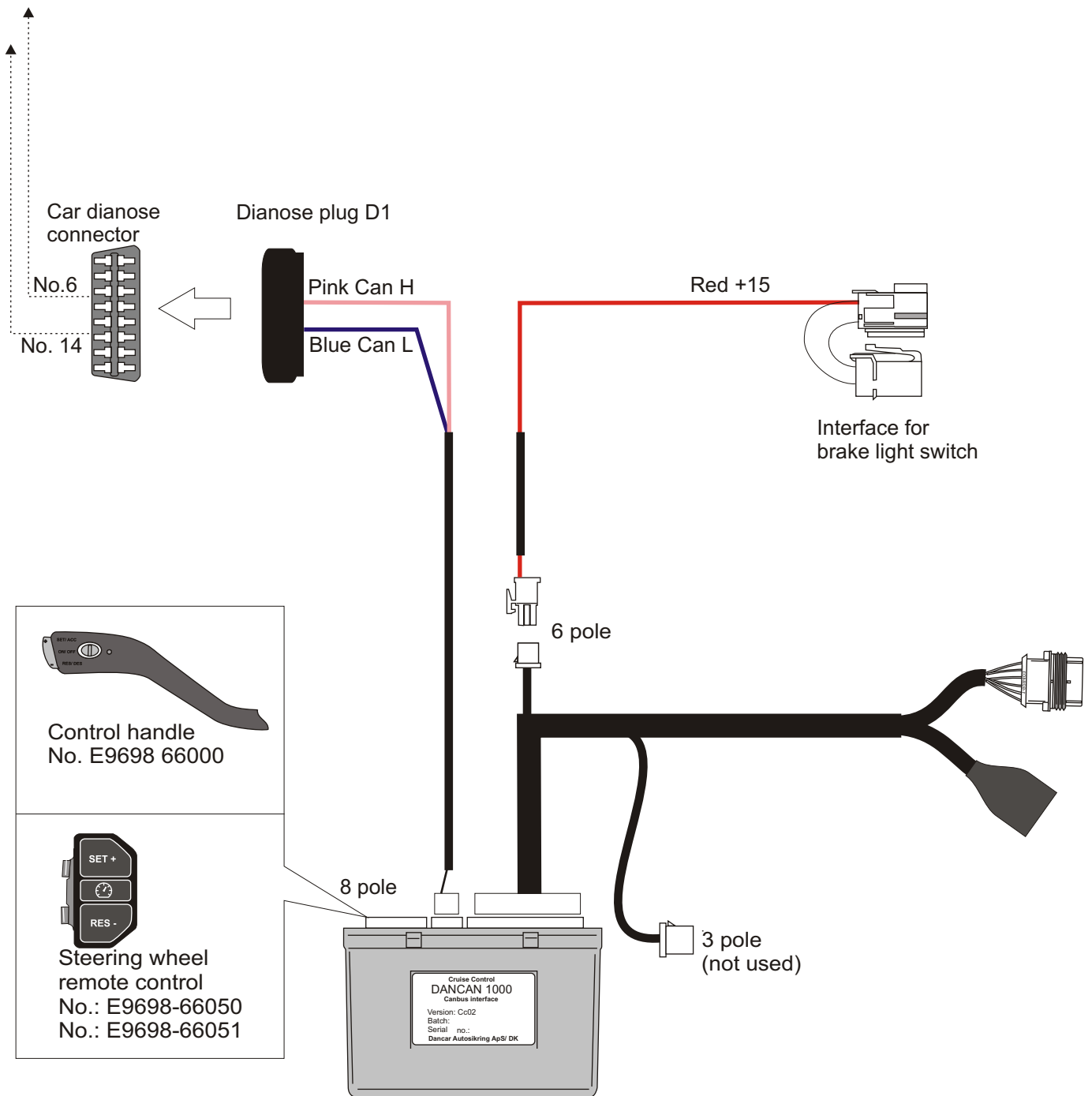
JKH0015GB



Instruction



## GENERAL SCHEME



### Note

#### SERVICE OF THE CAR

**Access to the car dianose connector, can be done by temporarily removal of the D1 dianose plug.**

### DATA

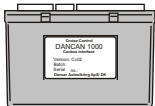



#### Technical information:

|                   |                    |
|-------------------|--------------------|
| Consumption       | 20 mAh             |
| Dimensions:       | 82X53X27           |
| Weight:           | 57 g.              |
| Supply:           | 12 v. dc           |
| Marking:          | <b>E11</b> marking |
| Patent:           | Yes                |
| TÜV/KBA:          | 90989              |
| User instruction: | Seperat            |

e11

10R-023610 Part No. 01T-063338

## NOTES

| CAR-PROGRAM LIST |            |  |  |             | USABLE CONTROL UNIT   |   |   |
|------------------|------------|--|--|-------------|---|---|---|
| Car model        | Year       |  |  |             |  |  |  |
|                  |            |  | Remark   | Program no: | E9698-66050   | E9698-66051   | E9698-66000   |
| SPORTAGE KM      | 25/8 2004- |  | manual gear  | 5           | Yes   |   | Yes   |
| CARNIVAL VQ      | 1/4 2006-  |  | manual gear  | 3           |   | Yes   | Yes   |
| CARNIVAL VQ      | 1/4 2006-  |  | automatic  | 4           |   | Yes   | Yes   |
| SORENTO BL       | 1/4 2006-  |  |  | 6           |   | Yes   | Yes   |
|                  |            |  |  |             |   |   |   |
|                  |            |  |  |             |   |   |   |
|                  |            |  |  |             |   |   |   |
|                  |            |  |  |             |   |   |   |
|                  |            |  |  |             |   |   |   |
|                  |            |  |  |             |   |   |   |
|                  |            |  |  |             |   |   |   |
|                  |            |  |  |             |   |   |   |
|                  |            |  |  |             |   |   |   |
|                  |            |  |  |             |   |   |   |

Updated fitting instruction and carlist see:

**[www.dancar.dk](http://www.dancar.dk)**